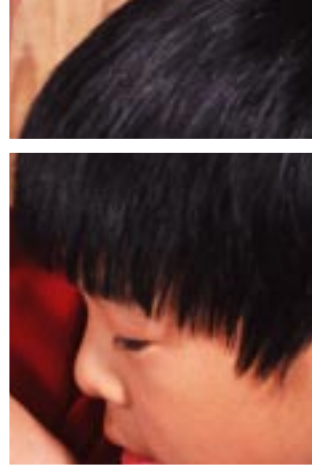


## About the Institute

The Office of Special Education Programs (OSEP) has funded the Research Institute on Progress Monitoring to develop a system of progress monitoring to evaluate effects of individualized instruction on access to and progress within the general education curriculum.

The Institute is housed at the Institute on Community Integration and the Department of Educational Psychology, Special Education in the College of Education and Human Development at the University of Minnesota. Iowa State University for Science and Technology is a lead collaborator in this research.



## Federal Project Officer

Kristen Lauer, Ph.D.  
U.S. Department of Education  
Office of Special Education Programs  
kristen.lauer@ed.gov

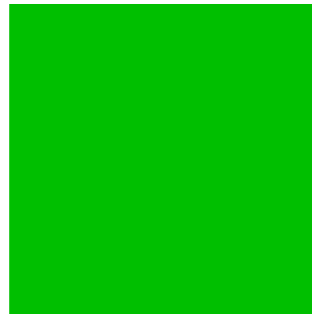
## National Advisory Board Members

The Institute's National Advisory Board members provide input and guidance to Institute activities.

Lynn Fuchs, Ph.D., Vanderbilt University  
Steve Graham, Ph.D., Vanderbilt University  
Joe Jenkins, Ph.D., University of Washington  
Harold Kleinert, Ph.D., University of Kentucky  
Ricki Sabia, J.D., Parent Member  
Debbie Speece, Ph.D., University of Maryland

## Objectives of the Institute

- Establish conceptual framework and research plans for developing a *seamless and flexible* system of progress monitoring to be used across ages (K-12), abilities, and curricula.
- Identify and validate progress monitoring strategies in reading, writing, math and science using Curriculum Based Measurement (CBM).
- Establish measures that reflect performance and predict progress in the general education curriculum.
- Develop a process for determining Tables of Probable Success for passing state standards tests.
- Evaluate the effects of progress monitoring on student performance and teacher instruction.
- Assess the effects of instructional context (e.g., intensity and consistency of instruction) on student growth.



## The National Center on Student Progress Monitoring

This OSEP funded Center's mission is to provide technical assistance to states and districts and disseminate information about progress monitoring practices proven to work in different academic content areas (Gr. K-5). The Center is housed at the American Institutes for Research.

Email: [studentprogress@air.org](mailto:studentprogress@air.org)

Web: [www.studentprogress.org](http://www.studentprogress.org)



## Institute Staff

### Principal Investigators and Directors

Chris Espin, Ph.D.  
espin001@umn.edu

Teri Wallace, Ph.D.  
walla001@umn.edu

### Researchers

Stan Deno, Ph.D.  
denox001@umn.edu

Anne Foegen, Ph.D.  
afoegen@iastate.edu

Kristen McMaster, Ph.D.  
mcmas004@umn.edu

Scott McConnell, Ph.D.  
smcconne@umn.edu

Sue Rose, Ph.D.  
srose@umn.edu

### Statistical Advisor

Jeff Long, Ph.D.  
longj@umn.edu

### Research Fellow

Tom Bartholomay, M.A.  
barth020@umn.edu

### Other Staff and Students

Many Graduate Research Assistants and others will assist with this project over the years but their names will change so they are not listed individually.

## The College of Education & Human Development

Produced by the Research Institute on Progress Monitoring (Grant No. H324H030003) awarded to the Institute on Community Integration (UCEDD), College of Education and Human Development, at the University of Minnesota, by the Office of Special Education Programs.

This document is available in alternate formats upon request.  
6-04/3M

UNIVERSITY OF MINNESOTA



## Research Institute on Progress Monitoring

Institute on Community Integration &  
Department of Educational Psychology

## For More Information, Contact:

Research Institute on Progress Monitoring  
University of Minnesota  
Institute on Community Integration  
111A Pattee Hall, 150 Pillsbury Drive S.E.  
Minneapolis, MN 55455

Email: [ripm@umn.edu](mailto:ripm@umn.edu)

Phone: 612.626.7220

Fax: 612.625.6619

Web: <http://progressmonitoring.org>

